

PA768 Single Slot Cradle



Quick Start Guide

V1.1

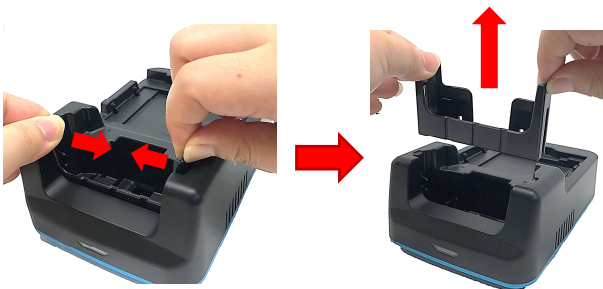
▶ How to Use PA768 Single Slot Cradle

There are two options to charge PA768 terminal:

1. Charge PA768 with bumper, hand strap or gun grip.
2. Charge PA768 without bumper after installing the detachable cover.

▶ How to Remove the Detachable Cover

Grab the two edges on top of the detachable cover and bent inward, then hold and pull up the cover to remove it.



▶ Package

Please make sure the following contents are in the PA768 single slot cradle gift box.
If something is missing or damaged, please contact your Unitech representative.

▶ The Package Contents

- PA768 Single Slot Cradle
- Detachable cover for PA768 without bumper
- 5V/6A <3-pin> power supply

▶ Optional Accessories

- 3-Pin Power Cord (UK) (PN#1550-602689G)
- Power Cord (EU) (PN#1550-602333G)
- Power Cord(US) (PN#1010-601551G)

▶ How to Install the Detachable Part

Insert the detachable cover into the cradle until you hear a click sound.



WARNING!

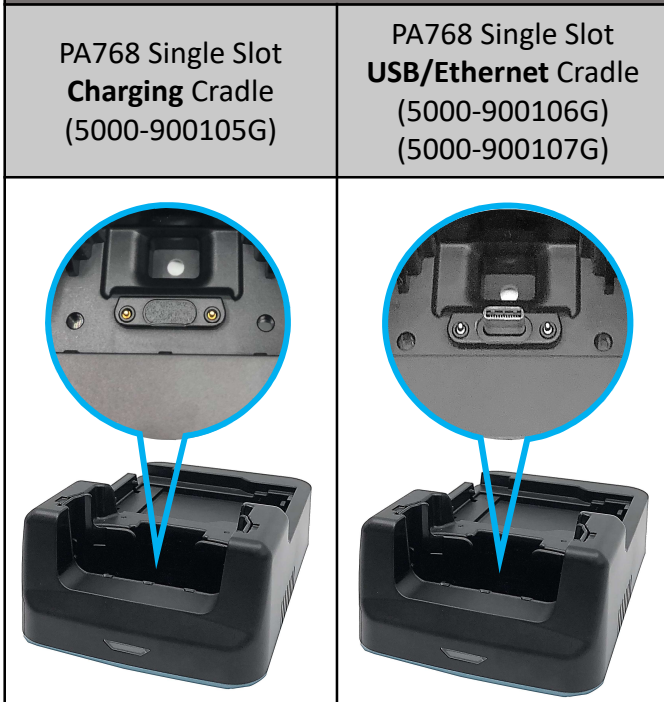
There is a risk of fire and burns if the battery is handled improperly. DO NOT disassemble, crush, puncture, short external contacts, or dispose the battery pack in fire or water. DO NOT attempt to open or service the battery. Dispose used batteries according to local recycling guidelines in your area.

CAUTION!

To ensure the unit working properly, please keep all connectors away from the contaminants such as dust, grease, mud, and water. Negligence may cause the unit to lose communication, short circuit, or overheated. If the connector is damaged, please ensure the connector is fully repaired before using the unit to avoid short circuiting.

▶ Product View

■ PA768 Single Slot Cradle



▶ LED Indicator Status



LED

Cradle LED

LED Status	Description
Blue LED	Power On/Battery fully charged
Red LED	Battery charging

Note: When PA768 is inserted in the cradle, the LED indicator on the cradle will not be changed. The charging status is indicated by the LED on PA768.

PA768 LED

LED Status	Description
Blue LED	Power On/Battery fully charged
Red LED	Battery charging

▶ Install the Battery

1. Press and hold the two buckles on both side of the battery, align the battery with the battery compartment and insert from around 45 degree angle.



2. Press down the battery while holding the buckles, then release after the battery is completely insert into the battery compartment. Make sure the battery stays flat, and there is no gap between the battery and the battery compartment.



▶ Remove the Battery




1. Press and hold the two buckles on both side of the battery and push against the front.



2. Lift the battery while holding the buckles to remove.



▶ PA768 single slot Charging/USB cradle Comparison

P/N	Models	Description	Rear View
5000-900105G	PA768 1-Slot Charging Cradle with spare battery slot with power supply (5V/6A)	<ul style="list-style-type: none"> ■ Charging terminal via DC jack 	
5000-900106G	PA768 1-Slot USB Cradle with spare battery slot with power supply (5V/6A)	<ul style="list-style-type: none"> ■ Charging terminal via DC jack ■ Data transfer by USB Type-C between terminal and PC 	
5000-900107G	PA768 1-Slot Ethernet Cradle with spare battery slot with power supply (5V/6A)	<ul style="list-style-type: none"> ■ Charging terminal via DC jack ■ Data transfer by Ethernet (RJ45) or USB host (2.0) ■ Display Port via USB type C (DP only) 	



<http://www.ute.com/>

Copyright 2022 unitech Electronics Co., Ltd. All rights reserved.
Unitech is a registered trademark of Unitech Electronics Co., Ltd.